



# SPRING MOUNTAIN

VINEYARD

Mountain Winegrowing Since 1873





# SPRING MOUNTAIN

VINEYARD



**Spring Mountain Vineyard is a privately owned estate producing classic wines exclusively from its mountain vineyards high above the Napa Valley.**



## History

In the late 19<sup>th</sup> century, SMV vineyards were put under vine by European pioneers who looked to the hillsides instead of the Napa Valley floor.

Today, SMV is the most historically significant wine estate in the Napa Valley.

- **1873 – La Perla Vineyard - German-born Charles Lemme plants first Cabernet vines on Spring Mountain**
- **1885 – Miravalle Vineyard founded by Mexican-born Tiburcio Parrott**
- **1891 – Chevalier Vineyard founded by French-born Fortune Chevalier**
- **1968 – Spring Mountain Vineyard founded**
- **1992 – SMV expanded and revitalized with new vision**

# NAPA VALLEY

Distance to Pacific Ocean  
← 36mi / 58km

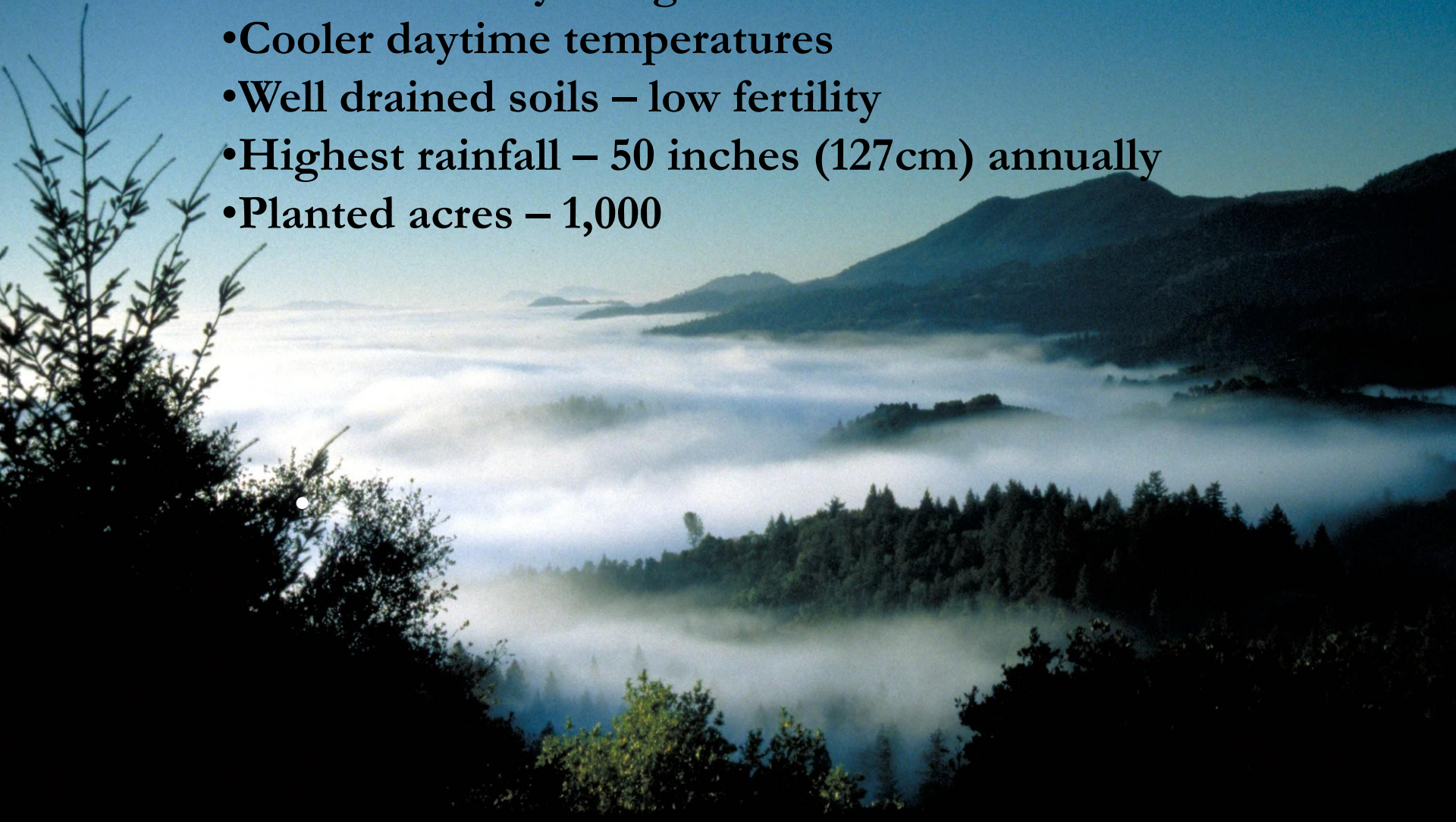
Distance to San Francisco  
↓ 48mi / 77km

Distance to Los Angeles  
↓ 360mi / 579km



# SPRING MOUNTAIN DISTRICT

- Noted for steeper, smaller vineyards, surrounded by evergreen trees
- Cooler daytime temperatures
- Well drained soils – low fertility
- Highest rainfall – 50 inches (127cm) annually
- Planted acres – 1,000





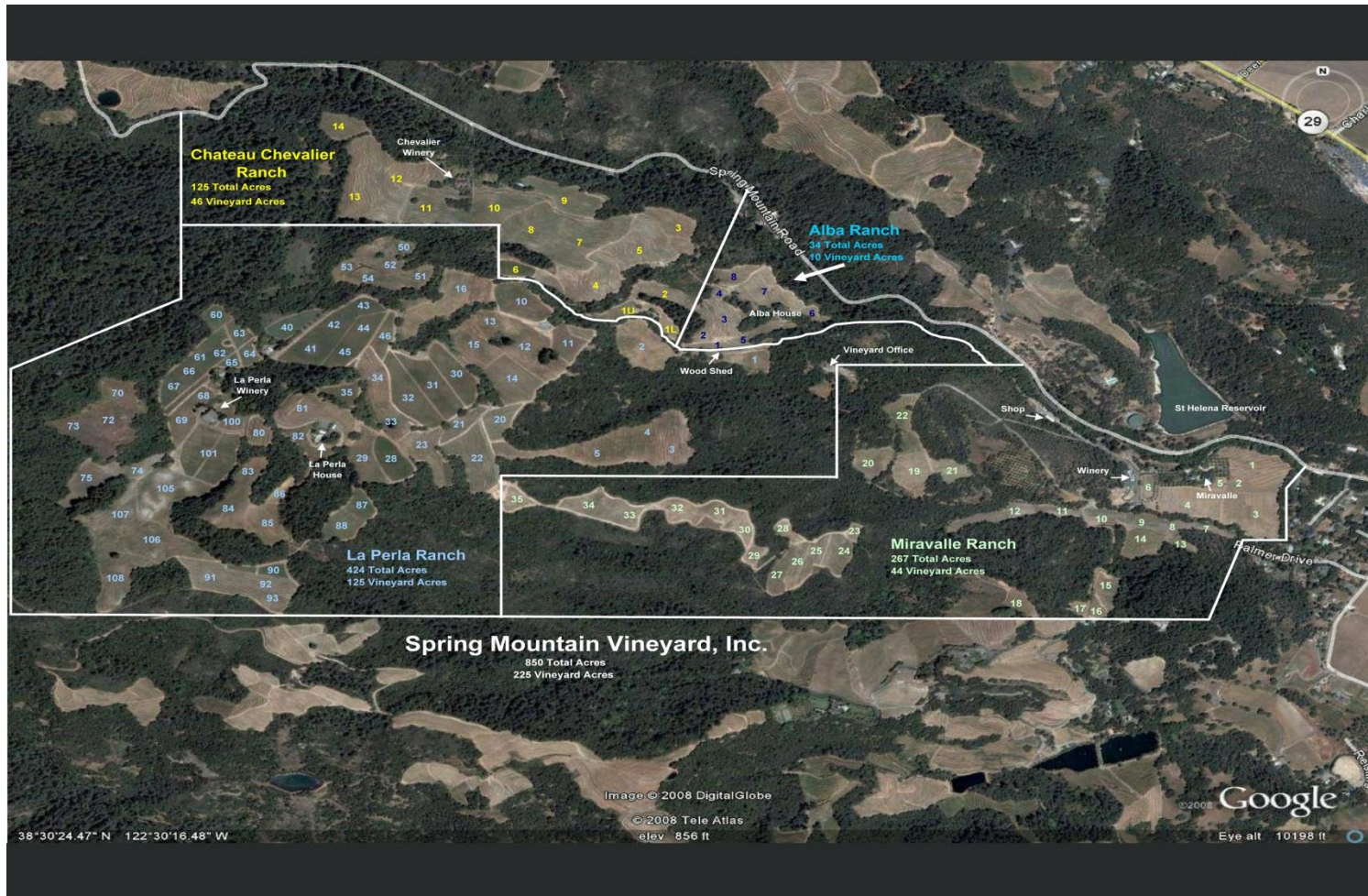
**SPRING MOUNTAIN**  
V I N E Y A R D

## **Estate Vineyards**

- **SMV footprint = size of New York's Central Park**
- **845 total acres – 225 planted acres**
- **Elevations from 400 to 1600 feet**
- **135 unique blocks**
- **8 soil types & multiple microclimates**
- **87% planted to red Bordeaux varieties**



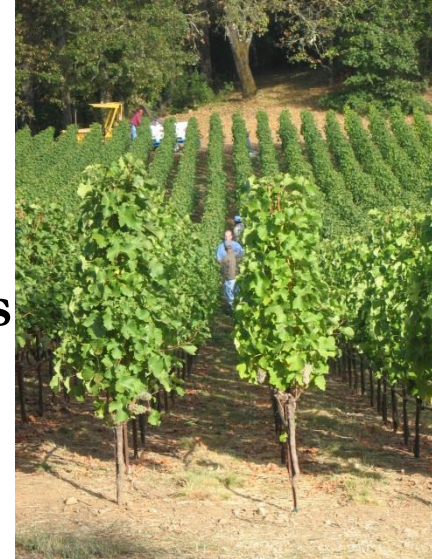

  
**SPRING MOUNTAIN**
  
 VINEYARD



  
**SPRING MOUNTAIN**  
V I N E Y A R D

## **Spring Mountain Fruit**

- **Low yields from thin, rocky soils**
- **0.5 - 2.0 tons /acre**
- **Small berries - high skin to juice ratio**
- **Deeply colored wines with concentrated flavor**
- **Cooler overall temperatures preserve acidity**
- **Foundation for making long-lived, structural wines**





## Winery & Caves

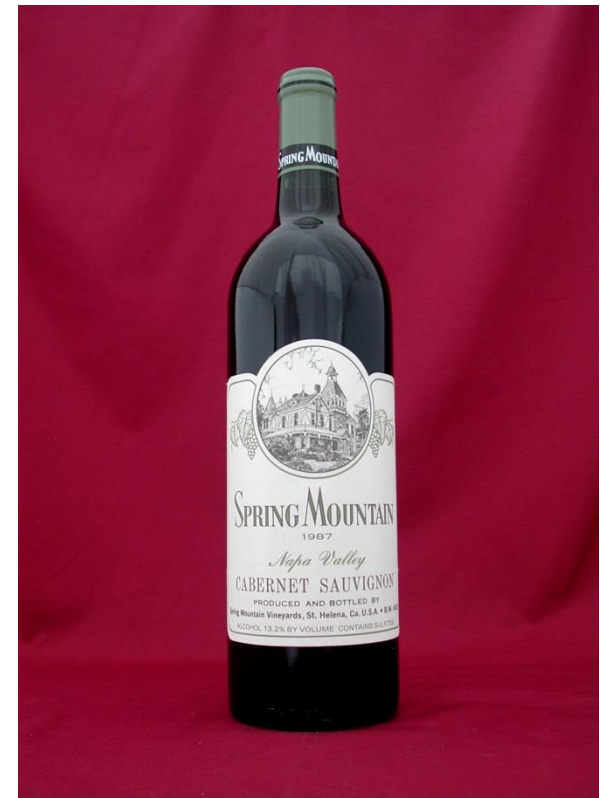
- The original wine cave, excavated by the Chinese in 1885, was expanded to 22,000 square feet in 2000.
- Natural fermentation in 7,000 liter Taransaud French oak vats.
- Barrel aging in French oak cooperage

1885 & 2000 meet in the SMV wine caves

—  —  
**SPRING MOUNTAIN**  
VINEYARD

## RARE & LIBRARY WINE SELECTION

- Limited availability of select vintages and verticals by allocation



☀

# SPRING MOUNTAIN

V I N E Y A R D

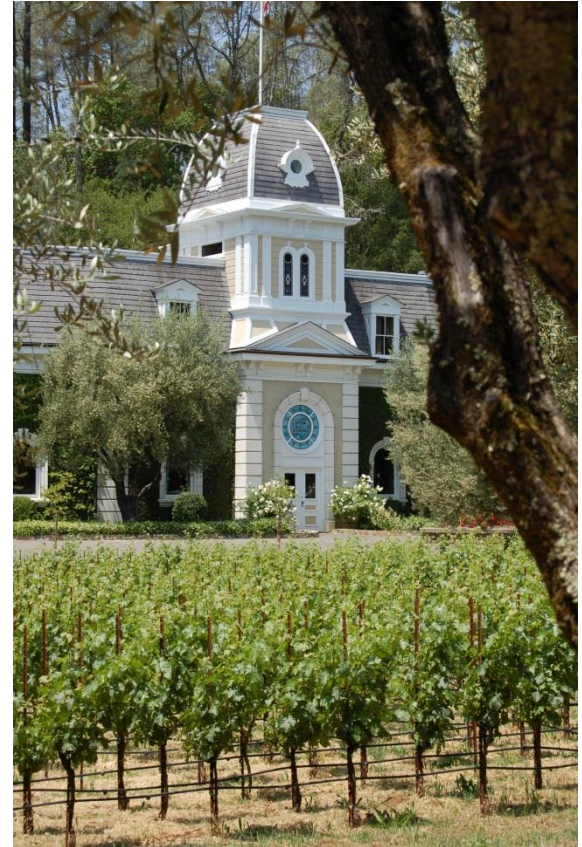
## TRADE VISITS

For an enhanced experience, we encourage trade to visit SMV

By appointment only

To book a visit, please contact:

For more winery information, visit:  
[www.SpringMountainVineyard.com](http://www.SpringMountainVineyard.com)



  
**SPRING MOUNTAIN**  
V I N E Y A R D

